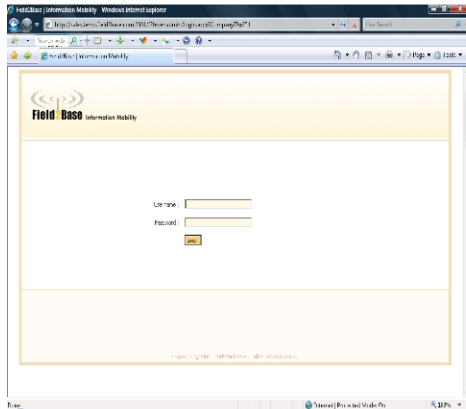
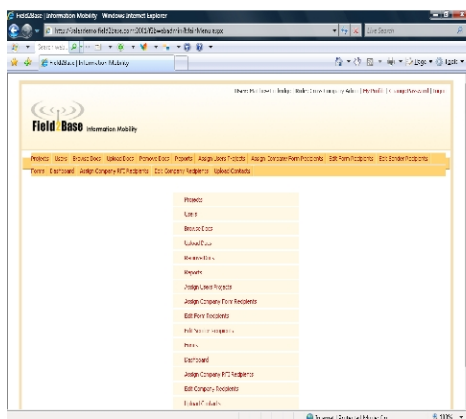




WebAdmin, from Field2Base, is a web based administration tool that allows corporate leadership to manage data being transmitted to and from the field. It also allows IT organizations to remotely troubleshoot Field IT issues and manage data security.



Using a secure internet connection from any PC, you can log into the WebAdmin console and begin managing your corporate data and interacting with your field workers.



- Manage Data Flow
- Manage User Rights
- Dispatch and Organize Work Orders
- Update User Forms
- See User Statistics
- Role Based Administration